

Smart Benches

- Solar Power
- WiFi network
- AirQuality sensors
- Contactless payment
- Scooters & eBike
- Digital signage (eInk)



1. SSB1

2. SSB2

3. STRAWBERRY TREE BLACK

4. SMART BENCH MINI

5. SMART TOTEM



ENERGY



WATER



MOBILITY

- **Green energy production**
Smart Benches are 100% solar powered, helping the city increase renewable energy production and reduce carbon emissions
- **Energy sharing**
Smart Benches can be connected to the power grid, providing extra clean energy to the city
- **Energy storage**
Smart Benches built-in battery systems can make city-wide energy storage network to help increase energy performance to the city
- **Outdoor Water Fountain**
Smart Benches can be connected to the water system and provide fresh water to the people in the outdoor places like squares, parks, etc.
- **Transport info (bus/metro arrival time)**
AI powered transport information provided by voice and on screens
- **Taxi call button**
Integrated button to call nearby Taxi and send location to the Taxi driver
- **Way-finding maps and local info**
Classic and digital maps showing local area and points of interest
- **Charging station for mobility solutions**
Charging stations for electric scooters, drones, etc



MEDIA



ENTERTAINMENT,
CULTURE AND
FASHION



TECHNOLOGY
AND DIGITAL

- **AR mixed reality**
Smart Bench triggers local Augmented Reality experience, showing relevant local information like nearby points of interest, tourist attractions, history of the local place, local recommendations, etc.
- **Music**
Built-in speakers and music streaming service to provide music experience in the public spaces
- **Local cultural info and recommendations**
Providing local recommendations for theatre shows, exhibitions and other cultural activities in the local communities around the Smart Bench, using Augmented reality and AI voice suggestions
- **Video content**
Providing relevant video entertainment content on screens and wifi login pages
- **Internet of Things (IoT) hub**
Smart Bench is outdoor IoT infrastructure, a modular sensor hub that can host up to 20 different IoT modules and sensors to measure urban environment in the real time
- **Big data analytics**
AI powered Data management platform for urban data analytics and predictions to help manage city in the real time (traffic, safety, air quality, pedestrian flow, etc)
- **Digital outdoor screens**
Network of digital screens for showing relevant public information



TOURISM

- **Tourists hubs**
Providing relevant services for tourists like, charging, wifi, tourist info and local recommendations
- **Real-time translation**
AI powered voice translation service to help tourist talk to local people and get relevant local info in their language



HEALTH AND
WELL-BEING

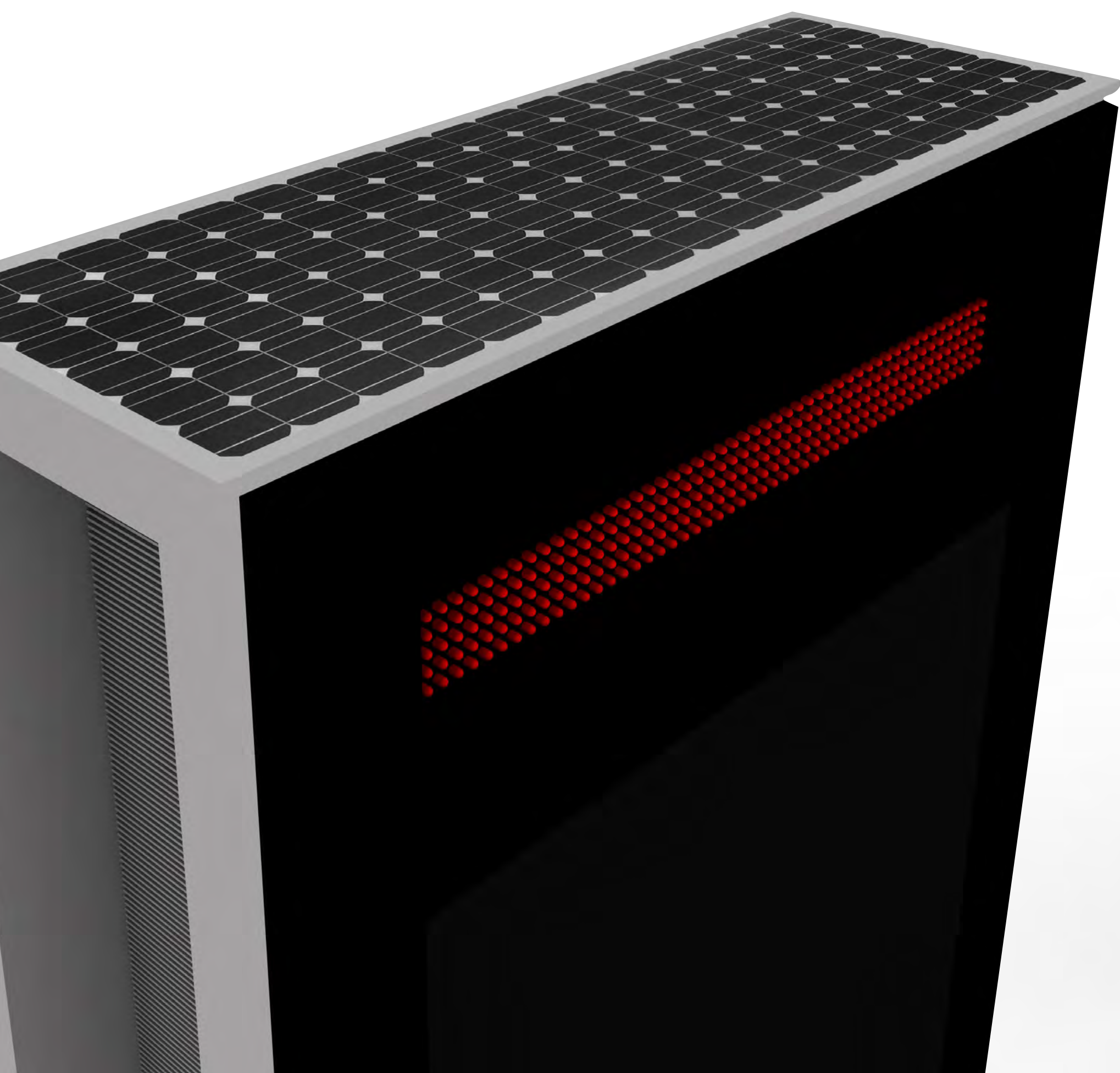
- **Air Quality and environmental info**
Providing real time advices for the best and healthiest routs and places to run, walk and enjoy. Using data form Smart Benches sensors and AI powered analytics to create heat maps and geo location advices
- **Voice coach for outdoor training programs**
AI guided voice coach training programs in sport yards and parks to help people train better and improve their health and wellbeing
- **Outdoor relaxation hubs**
Smart Benches providing relaxing nature sounds from around the world (ocean waves, waterfalls, rainforests, etc)



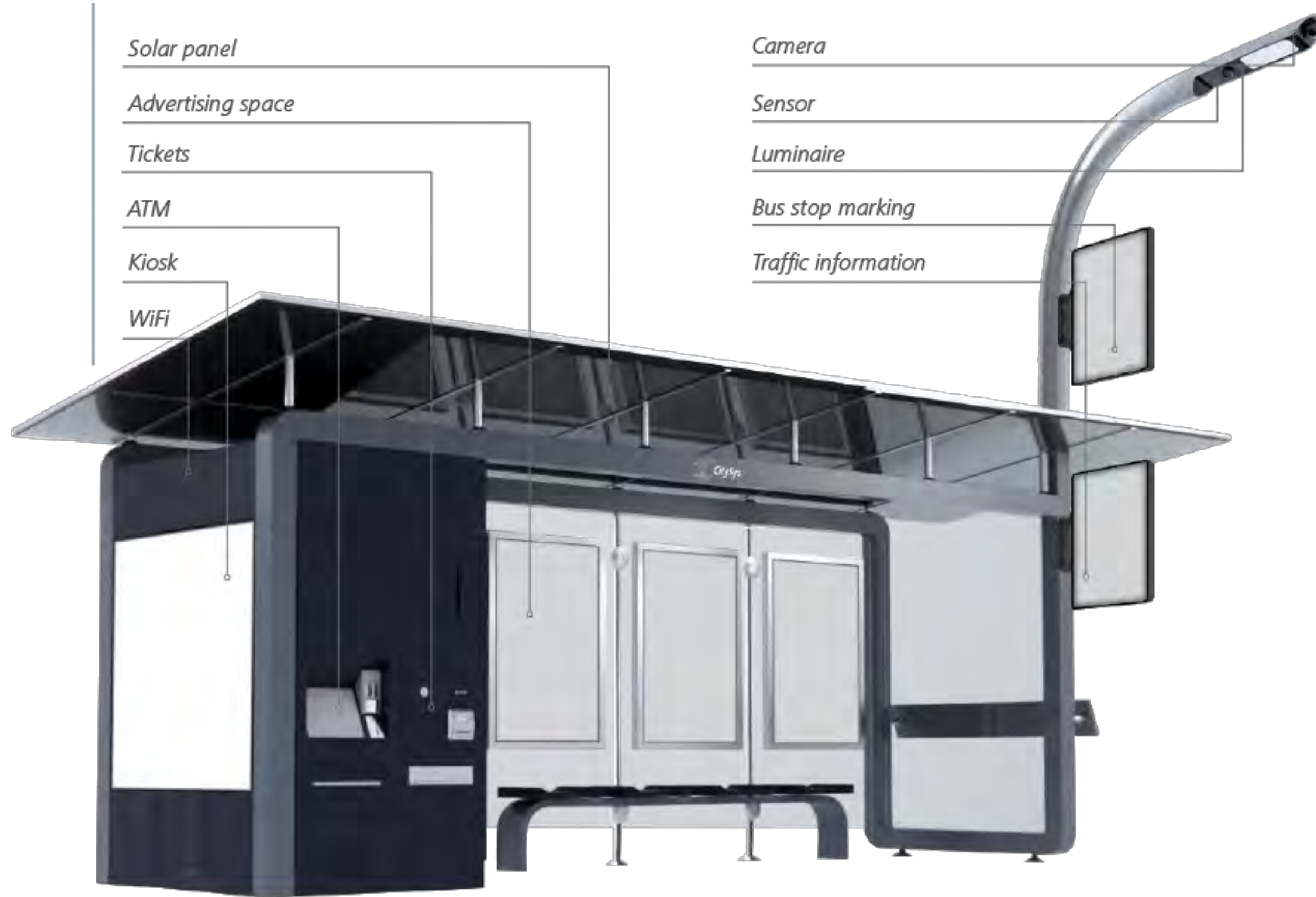
SERVICES

- **Local government services and info desk**
Interactive and AI powered info & support desk for residents
- **Local community costumer service**
Collecting feedback on user experience for living and visiting local communities to help improve local quality of life, using AI chat bots

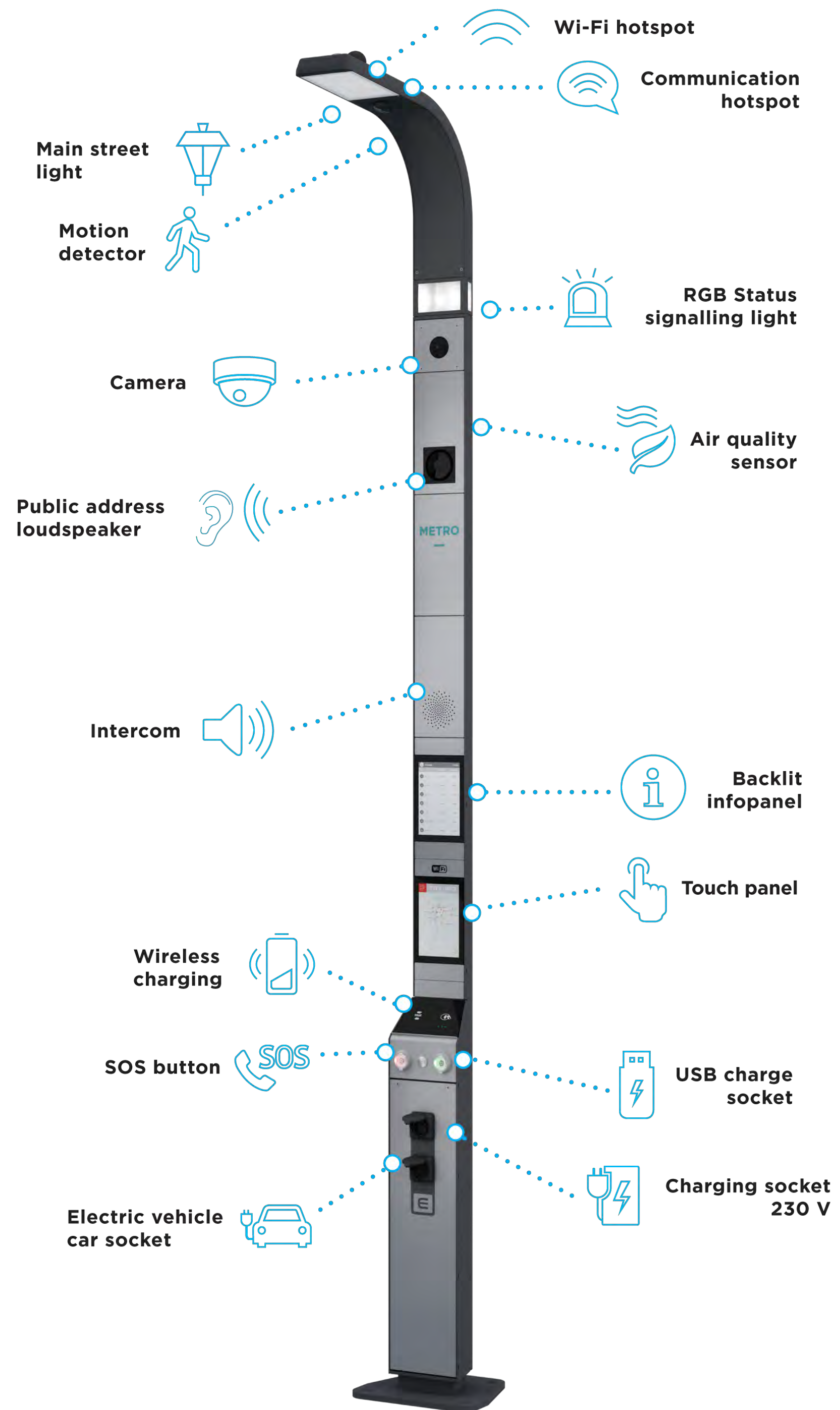
InTotem



Smart Bus Stops



Smart Pole



Smart Bins



Smart Parking



Vehicle Counting Sensing

Deployed at entrances and exits of multi-story car parks and on internal car park ramps

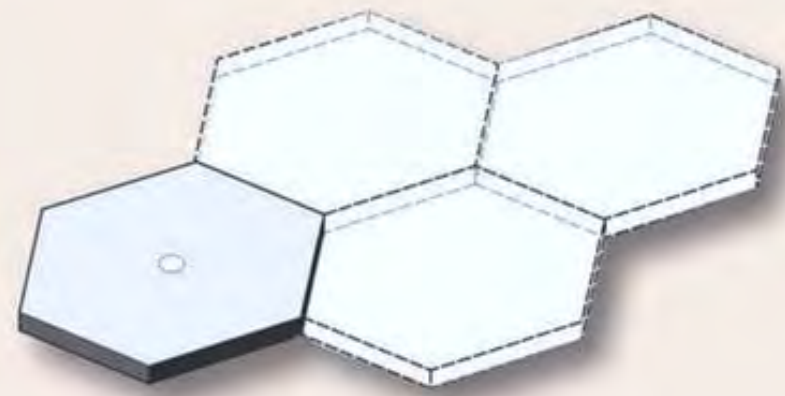
Spot Sensing for all bay types

Employees | Visitors & contractors | Electric Vehicle Charging Points | Disabled

Smart Bay Monitoring with Bluetooth connectivity

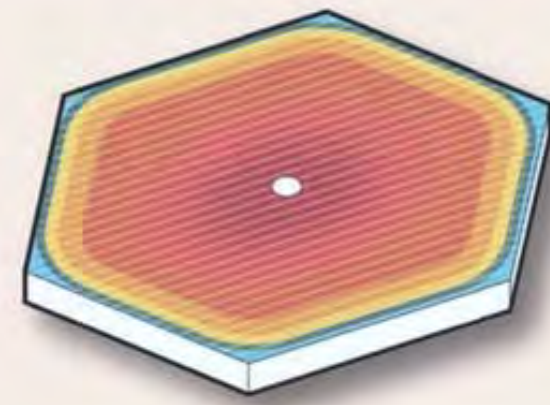
Carpool / Rideshare bays

Smart Pavement



Modular

Precast slabs to enable faster maintenance and replacement



Heated

Conductive concrete to melt snow and ice



Dynamic

LED Lights to signal changes in road use throughout the day



Green Zones

Dedicated landscape zones to bring green into streets and absorb stormwater